



# Dewberry III

CLASSIC SERIES

## WINDSONG RANCH

4250 OLD ROSEBUD LANE, PROSPER, TX 75078

HOMES FROM

**\$706,990 – \$773,990**

**3,261**  
SQUARE FEET

**5**  
BEDROOMS

**3.5**  
BATHROOMS

**2**  
CAR GARAGE



**ELEVATION A**



**ELEVATION AS**

ELEVATION AS



**ELEVATION C**

ELEVATION C



**ELEVATION CS**

ELEVATION CS



**ELEVATION D**

ELEVATION D



# Dewberry III

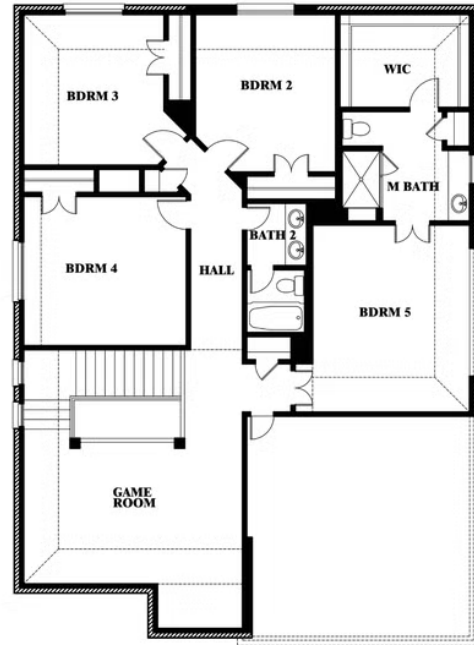
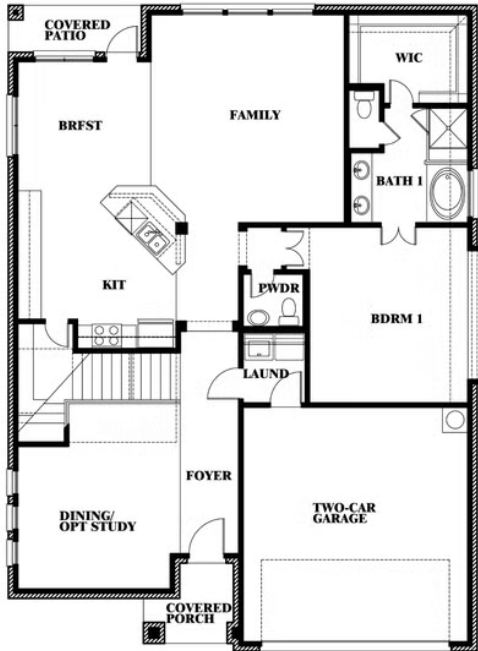
## WINDSONG RANCH

4250 OLD ROSEBUD LANE, PROSPER, TX 75078

### DEWBERRY III FLOOR PLAN



### Dewberry III



This brochure is for general informational purposes and is to be used as a guide only. Changes may be made during the development process and floorplans, dimensions, fixtures, fittings, finishes and specifications are subject to change without notice. Window placement, balcony configuration, wardrobe sizes and living areas may vary slightly within each plan type. EQUAL HOUSING OPPORTUNITY