



219 Comanche Trail

ALVARADO, TX 76009

SUNSET RIDGE

CAROLINA IV FLOOR PLAN

PRICED AT

~~\$508,203~~ **\$484,000**

3285

SQUARE FEET

4

BEDROOMS

3.0

BATHROOMS

2

CAR GARAGE



ELEVATION C

Bloomfield's popular Carolina IV plan offers 4 spacious bedrooms & versatile living spaces ready for your creative touch. Its open layout allows limitless hosting possibilities, enhanced by a cozy Stone-to-ceiling Fireplace in the Family Room and large windows. 3 baths, Study, Deluxe Kitchen, Game Room, Media Room, and an inviting Formal Dining Room. Imagine mornings in the cozy Family Room or under the Extended Covered Rear Patio, with a view of the fenced yard on an Interior lot. Wood-like Tile floors in the common areas add warmth and durability. Memories are ready to be made in the Deluxe Kitchen with an island, built-in SS appliances, upgraded Quartz countertops, and extensive storage from a wall of cabinets & the breakfast nook! Additional bedroom, bath, and Game Room flex space upstairs. Other features include window seats, an 8' front door, and uplighting. This gem won't last long- Call or visit Bloomfield at Sunset Ridge to learn more!



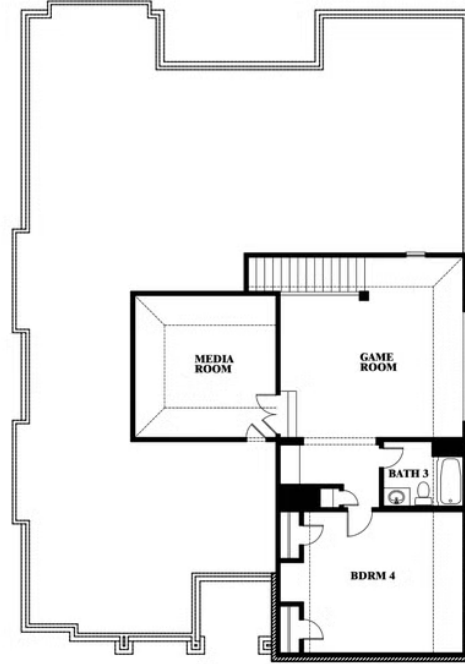
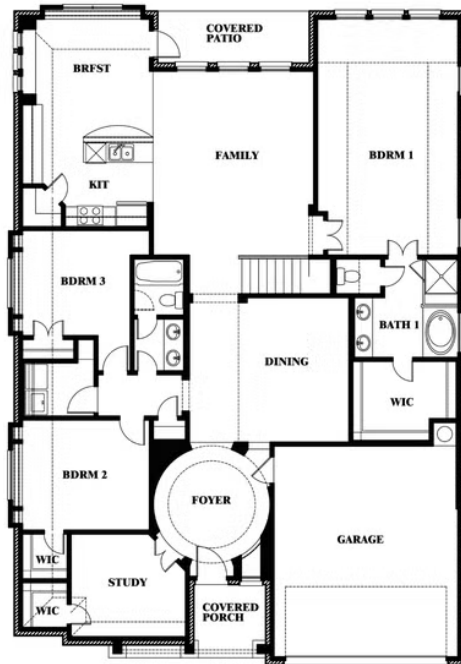
219 Comanche Trail

ALVARADO, TX 76009

CAROLINA IV FLOOR PLAN



Carolina IV



This brochure is for general informational purposes and is to be used as a guide only. Changes may be made during the development process and floorplans, dimensions, fixtures, fittings, finishes and specifications are subject to change without notice. Window placement, balcony configuration, wardrobe sizes and living areas may vary slightly within each plan type. EQUAL HOUSING OPPORTUNITY