



# Cypress II

CLASSIC SERIES

## RIDGE RANCH

3101 CORAL RIDGE COURT, MESQUITE, TX 75181

HOMES FROM

**\$420,990 – \$440,990**

**2,454**  
SQUARE FEET

**4**  
BEDROOMS

**3.0**  
BATHROOMS

**2**  
CAR GARAGE



**ELEVATION F**



**ELEVATION B**

ELEVATION B



**ELEVATION C**

ELEVATION C



**ELEVATION D**

ELEVATION D



**ELEVATION E**

ELEVATION E



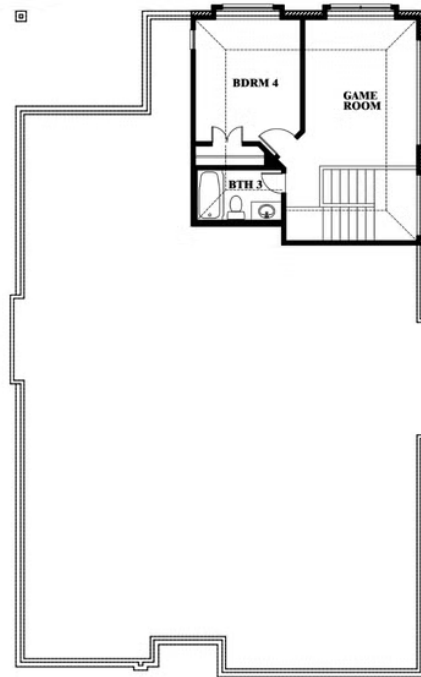
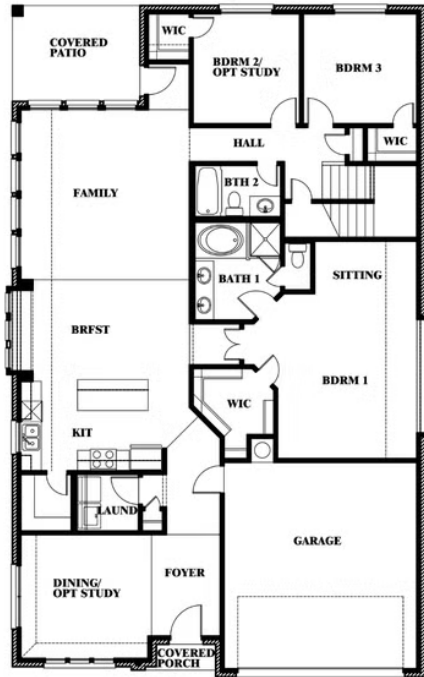
# Cypress II

## RIDGE RANCH

3101 CORAL RIDGE COURT, MESQUITE, TX 75181



## Cypress II



This brochure is for general informational purposes and is to be used as a guide only. Changes may be made during the development process and floorplans, dimensions, fixtures, fittings, finishes and specifications are subject to change without notice. Window placement, balcony configuration, wardrobe sizes and living areas may vary slightly within each plan type. EQUAL HOUSING OPPORTUNITY