



# Violet IV

CLASSIC SERIES

## WILLOW WOOD

809 CLAREMONT COURT, MCKINNEY, TX 75071

HOMES FROM

**\$609,990 – \$629,990**

**2,838**

SQUARE FEET

**4**

BEDROOMS

**3.5**

BATHROOMS

**2**

CAR GARAGE



**ELEVATION A**



**ELEVATION AS**

ELEVATION AS



**ELEVATION B**

ELEVATION B



**ELEVATION C**

ELEVATION C



**ELEVATION D**

ELEVATION D



# Violet IV

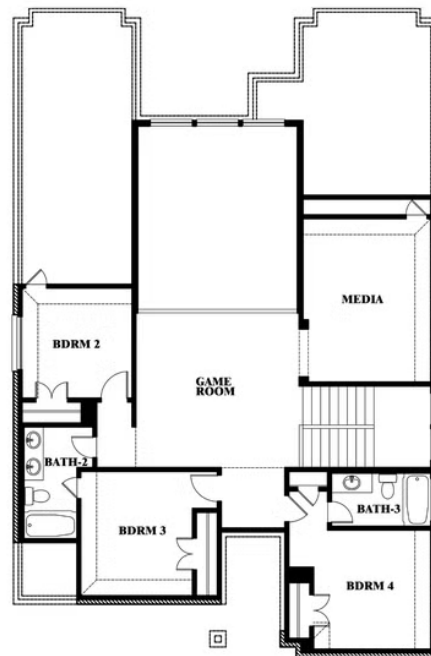
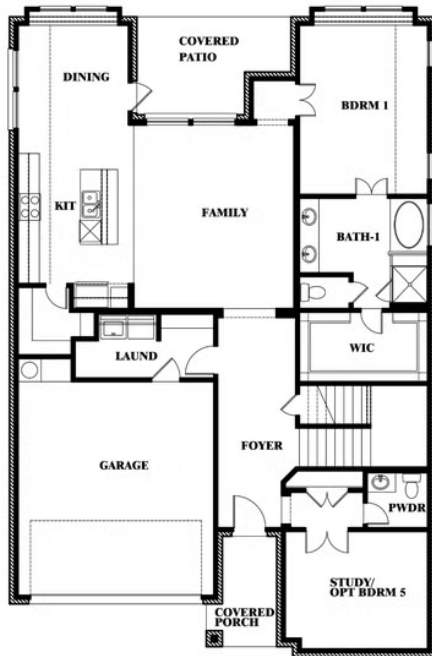
## VIOLET IV FLOOR PLAN

## WILLOW WOOD

809 CLAREMONT COURT, MCKINNEY, TX 75071



## Violet IV



This brochure is for general informational purposes and is to be used as a guide only. Changes may be made during the development process and floorplans, dimensions, fixtures, fittings, finishes and specifications are subject to change without notice. Window placement, balcony configuration, wardrobe sizes and living areas may vary slightly within each plan type. EQUAL HOUSING OPPORTUNITY



# Violet IV

**VIOLET IV FLOOR PLAN WITH OPTIONAL BEDROOM AT STUDY**

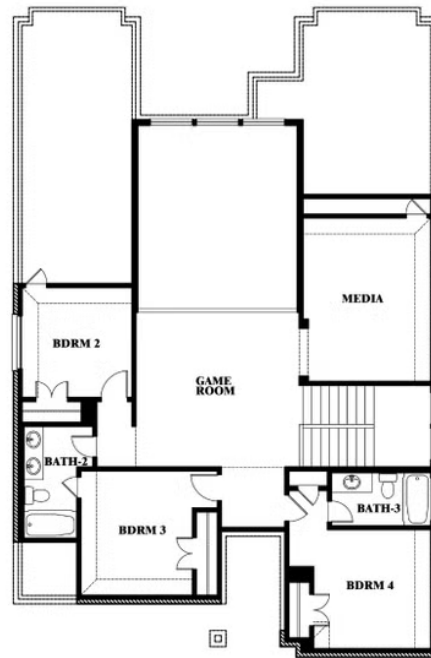
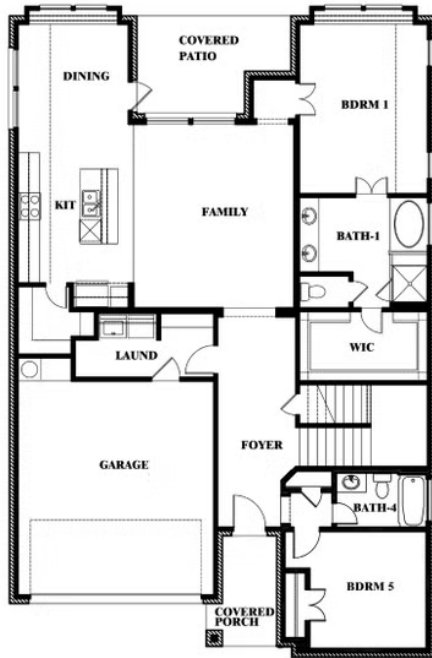
## WILLOW WOOD

809 CLAREMONT COURT, MCKINNEY, TX 75071



## Violet IV

Opt. Bed 5 & Bath 4 at Study



This brochure is for general informational purposes and is to be used as a guide only. Changes may be made during the development process and floorplans, dimensions, fixtures, fittings, finishes and specifications are subject to change without notice. Window placement, balcony configuration, wardrobe sizes and living areas may vary slightly within each plan type. EQUAL HOUSING OPPORTUNITY