



Bellflower II

CLASSIC SERIES

GEORGETOWN AT KINGS FORT

4102 BERRY LANE, KAUFMAN, TX 75142

HOMES FROM

\$501,990

3,774

SQUARE FEET

4

BEDROOMS

3.5

BATHROOMS

2

CAR GARAGE



ELEVATION C



ELEVATION A

ELEVATION A



ELEVATION AS

ELEVATION AS



ELEVATION B

ELEVATION B



ELEVATION D

ELEVATION D



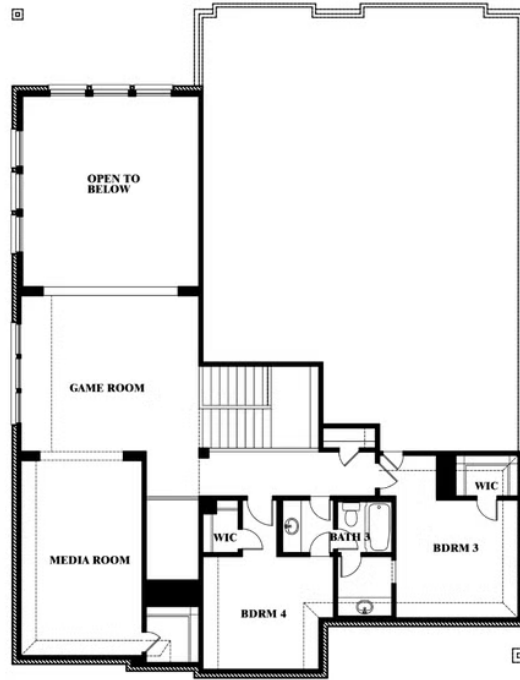
Bellflower II

GEORGETOWN AT KINGS FORT

4102 BERRY LANE, KAUFMAN, TX 75142



Bellflower II



This brochure is for general informational purposes and is to be used as a guide only. Changes may be made during the development process and floorplans, dimensions, fixtures, fittings, finishes and specifications are subject to change without notice. Window placement, balcony configuration, wardrobe sizes and living areas may vary slightly within each plan type. EQUAL HOUSING OPPORTUNITY



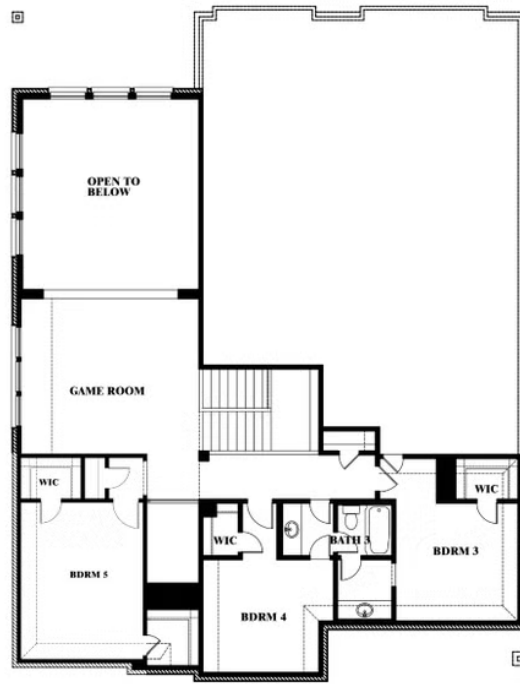
Bellflower II

GEORGETOWN AT KINGS FORT

4102 BERRY LANE, KAUFMAN, TX 75142



Bellflower II Opt. Bed 5 at Media



This brochure is for general informational purposes and is to be used as a guide only. Changes may be made during the development process and floorplans, dimensions, fixtures, fittings, finishes and specifications are subject to change without notice. Window placement, balcony configuration, wardrobe sizes and living areas may vary slightly within each plan type. EQUAL HOUSING OPPORTUNITY



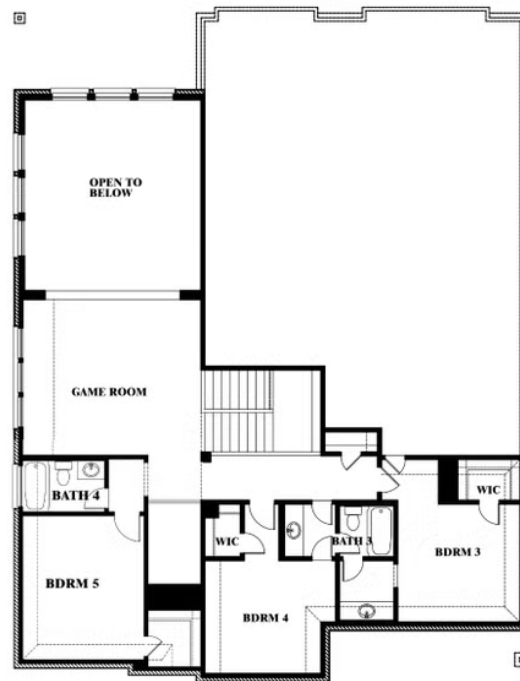
Bellflower II

GEORGETOWN AT KINGS FORT

4102 BERRY LANE, KAUFMAN, TX 75142



Bellflower II Opt. Bed 5/Bath 4 at Media



This brochure is for general informational purposes and is to be used as a guide only. Changes may be made during the development process and floorplans, dimensions, fixtures, fittings, finishes and specifications are subject to change without notice. Window placement, balcony configuration, wardrobe sizes and living areas may vary slightly within each plan type. EQUAL HOUSING OPPORTUNITY