

Magnolia II

CLASSIC SERIES

TIMBERBROOK

206 OAKCREST DRIVE, JUSTIN, TX 76247

HOMES FROM

\$527,990

3,430

SQUARE FEET

4

BEDROOMS

2.5

BATHROOMS

2

CAR GARAGE



ELEVATION A



ELEVATION AS

ELEVATION AS



ELEVATION C

ELEVATION C



ELEVATION CS

ELEVATION CS



ELEVATION D

ELEVATION D



ELEVATION F

ELEVATION F

Magnolia II

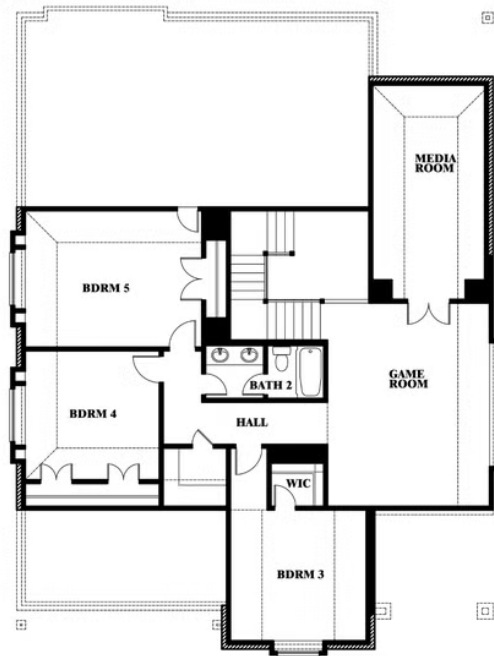
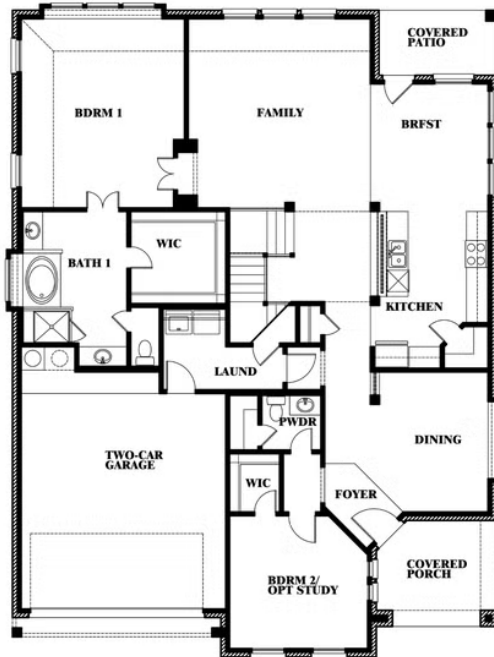
TIMBERBROOK

206 OAKCREST DRIVE, JUSTIN, TX 76247

MAGNOLIA II FLOOR PLAN



Magnolia II



This brochure is for general informational purposes and is to be used as a guide only. Changes may be made during the development process and floorplans, dimensions, fixtures, fittings, finishes and specifications are subject to change without notice. Window placement, balcony configuration, wardrobe sizes and living areas may vary slightly within each plan type. EQUAL HOUSING OPPORTUNITY