



Dogwood

CLASSIC SERIES

SILO MILLS

4425 SWEET ACRES AVE, JOSHUA, TX 76058

HOMES FROM

\$339,990

1,840

SQUARE FEET

3

BEDROOMS

2.0

BATHROOMS

2

CAR GARAGE

ELEVATION ES



ELEVATION A



ELEVATION A

ELEVATION C



ELEVATION C

ELEVATION FS



ELEVATION FS

ELEVATION G



ELEVATION G

ELEVATION GS



ELEVATION GS



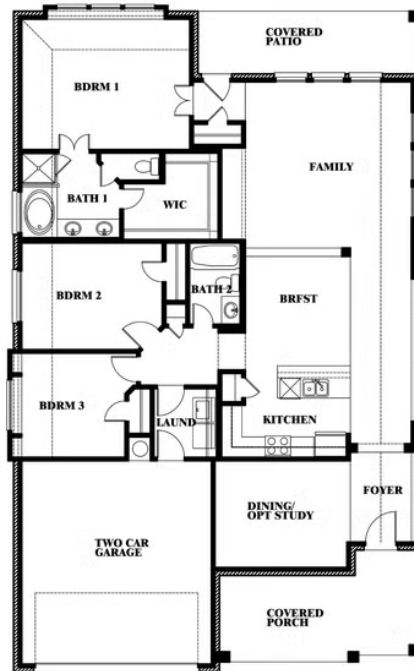
Dogwood

SILO MILLS

4425 SWEET ACRES AVE, JOSHUA, TX 76058



Dogwood



This brochure is for general informational purposes and is to be used as a guide only. Changes may be made during the development process and floorplans, dimensions, fixtures, fittings, finishes and specifications are subject to change without notice. Window placement, balcony configuration, wardrobe sizes and living areas may vary slightly within each plan type. EQUAL HOUSING OPPORTUNITY